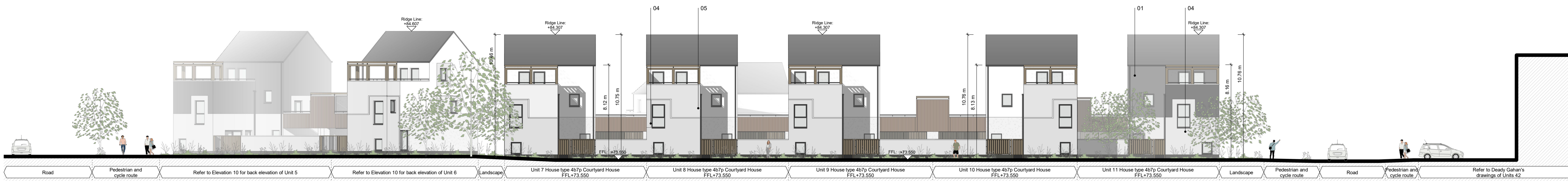


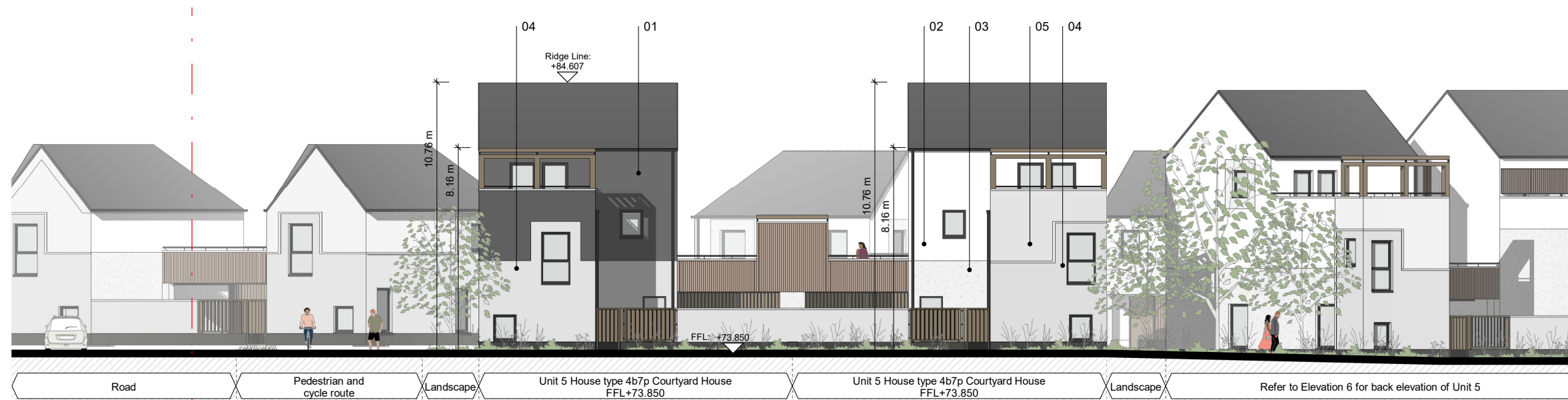
Elevation 7
1 : 200



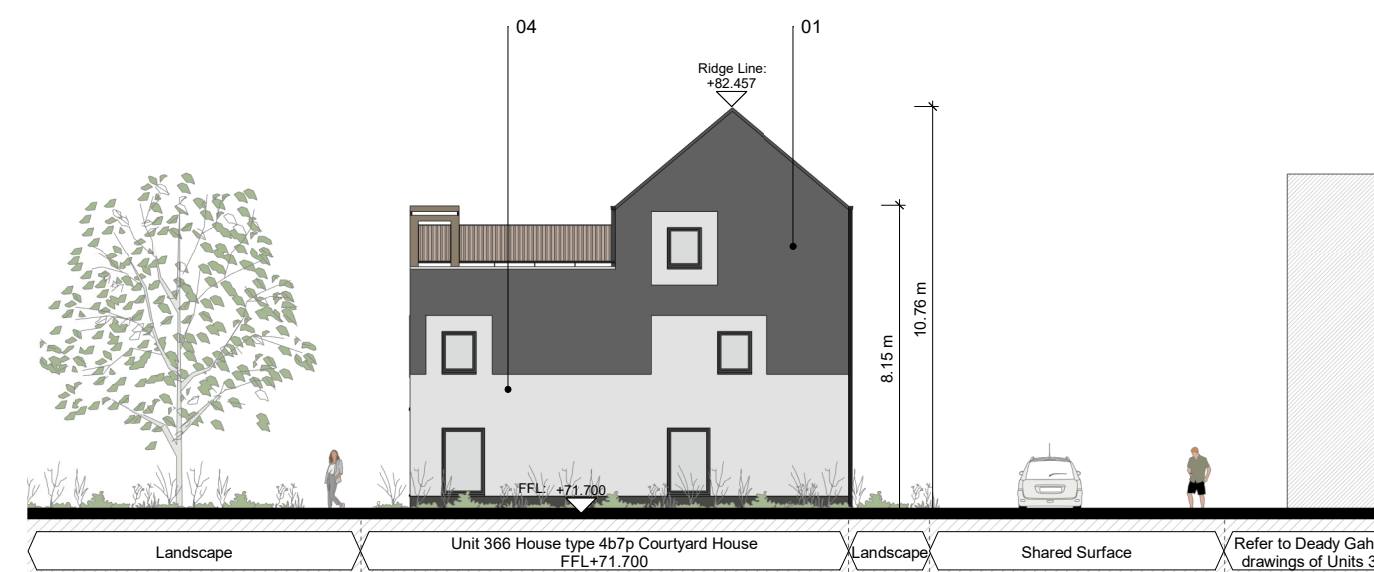
Elevation 8
1 : 200



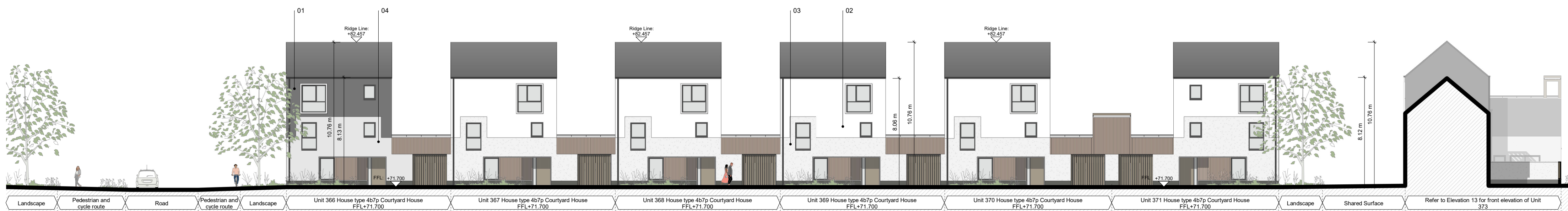
Elevation 9
1 : 200



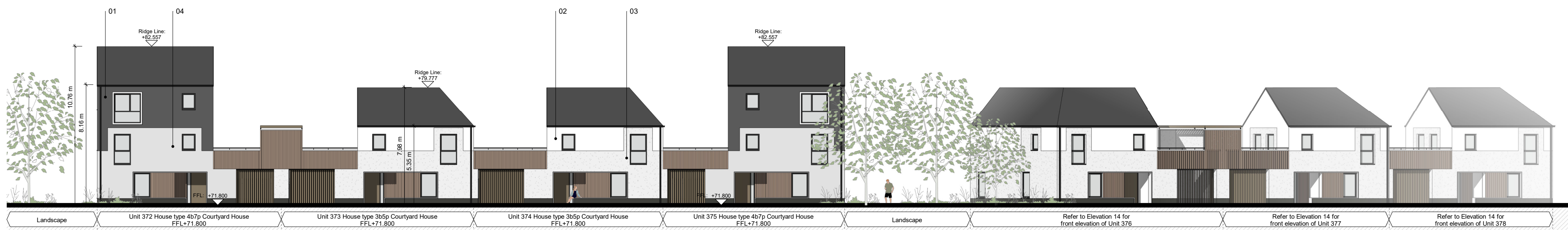
Elevation 10
1 : 200



Elevation 11
1 : 200



Elevation 12
1 : 200

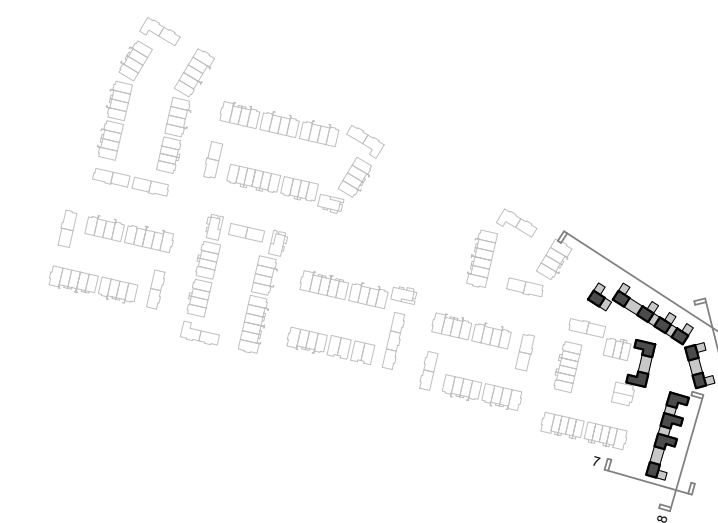


Elevation 13
1 : 200

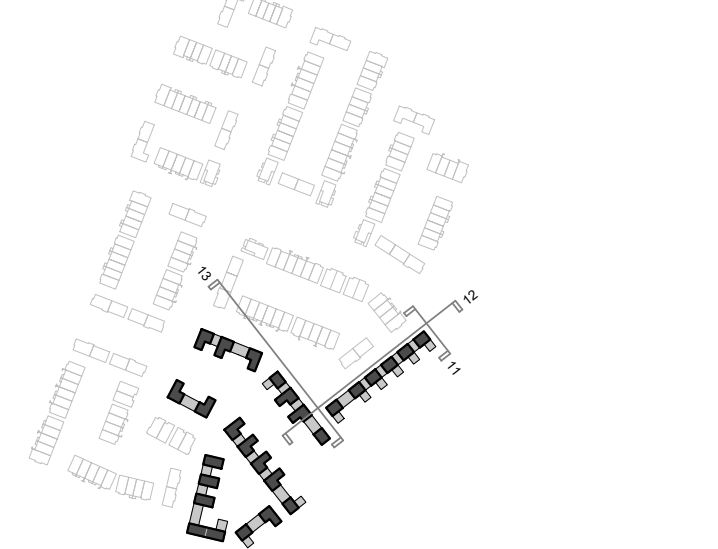
general notes

1. © This drawing is copyright Proctor and Matthews Architects and must not be copied in whole or part without prior consent.
2. Do not scale from this drawing.
3. Refer to drawing number.
4. This drawing is to be read in conjunction with all other relevant architects and engineer's drawings.
5. All dimensions to be checked on site prior to commencement of works and any discrepancies are to be checked with the architect immediately.
6. Unless otherwise stated all dimensions are in mm.

Key Plan - Site 2



Key Plan - Site 3



Material Key

- 01 Smooth Texture Render - Dark Grey
- 02 Smooth Texture Render - White
- 03 Rough Texture Render - White
- 04 Grey/White Brick with Grey Mortar
- 05 Grey/White Brick with Colour Match Mortar

rev	date	description	dw
P02	07.12.21	For Planning	SS
P01	26.10.21	For Planning	SS
/	19.03.21	For Planning	MCG

client Glenveagh Homes

project **A496 Lands at Hollystown-Kilmartin**

status **S2 - Information**

drawing title **Site Elevations + Sections Sheet 02**

drawing no **A496 - PMA-XX-XX-DR-A-0201**

project no - originator - volume - level - type - role - number

scale As indicated date 02/23/21 drawn MCG
original A1 revision P02 checked CM

Proctor & Matthews Architects

address 7 Blue Lion Place, 237 Long Lane, London SE1 4PU
telephone +44 (0)20 7378 6695
fax +44 (0)20 7378 1372
email info@proctorandmatthews.com
website www.proctorandmatthews.com